

**THE BIRCH
(B)**

1-STORY VILLA

3 BEDROOMS

2.5 BATHROOMS

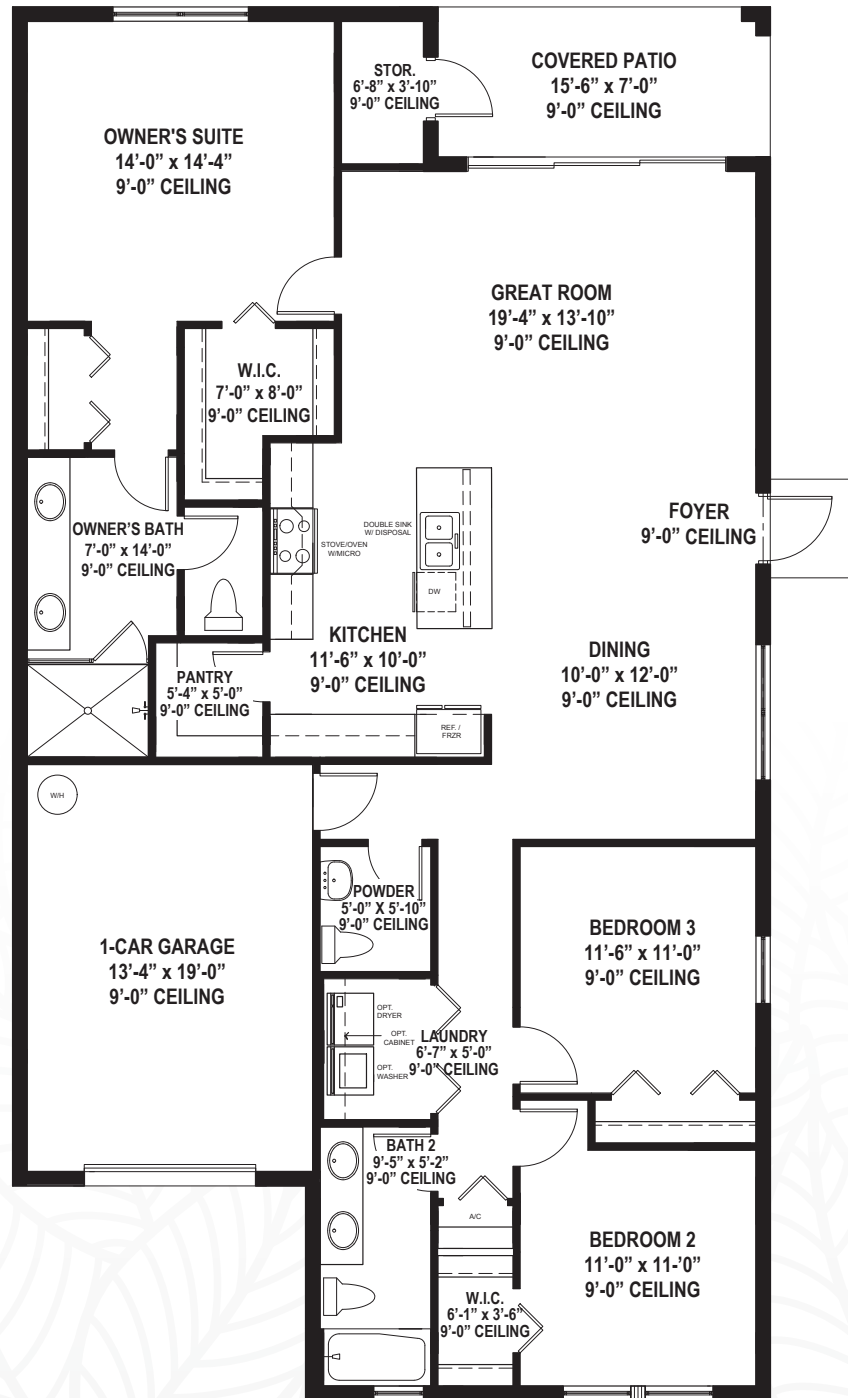
1-CAR GARAGE

1,735 INTERIOR SQ.FT.

2,142 TOTAL SQ.FT.

PARKWAYPRESERVE.COM

SALES CENTER:
10945 PREACHERS COVE LANE
FORT MYERS, FL 33913
239.695.7712



Stated square footages and dimensions of units are based on measurements to the exterior boundaries of the exterior walls and the centerline of interior demising walls between units and will vary from the square footages and dimensions of the unit (which generally only includes the interior airspace between the perimeter walls and excludes interior structural components and other common elements). Measurements and dimensions of rooms set forth on this floor plan are generally taken at the farthest points of each given room (as if the room were a perfect rectangle), without regard for any cutouts, soffits or other variations. Accordingly, the square footage of the actual room will typically be smaller than the product obtained by multiplying the stated length times width. All square footages, dimensions and measurements are estimates which are based on preliminary plans and will vary with actual construction. All floorplans, specifications and other development plans are proposed and conceptual only, and are subject to change and will not necessarily accurately reflect the final plans and specifications.